
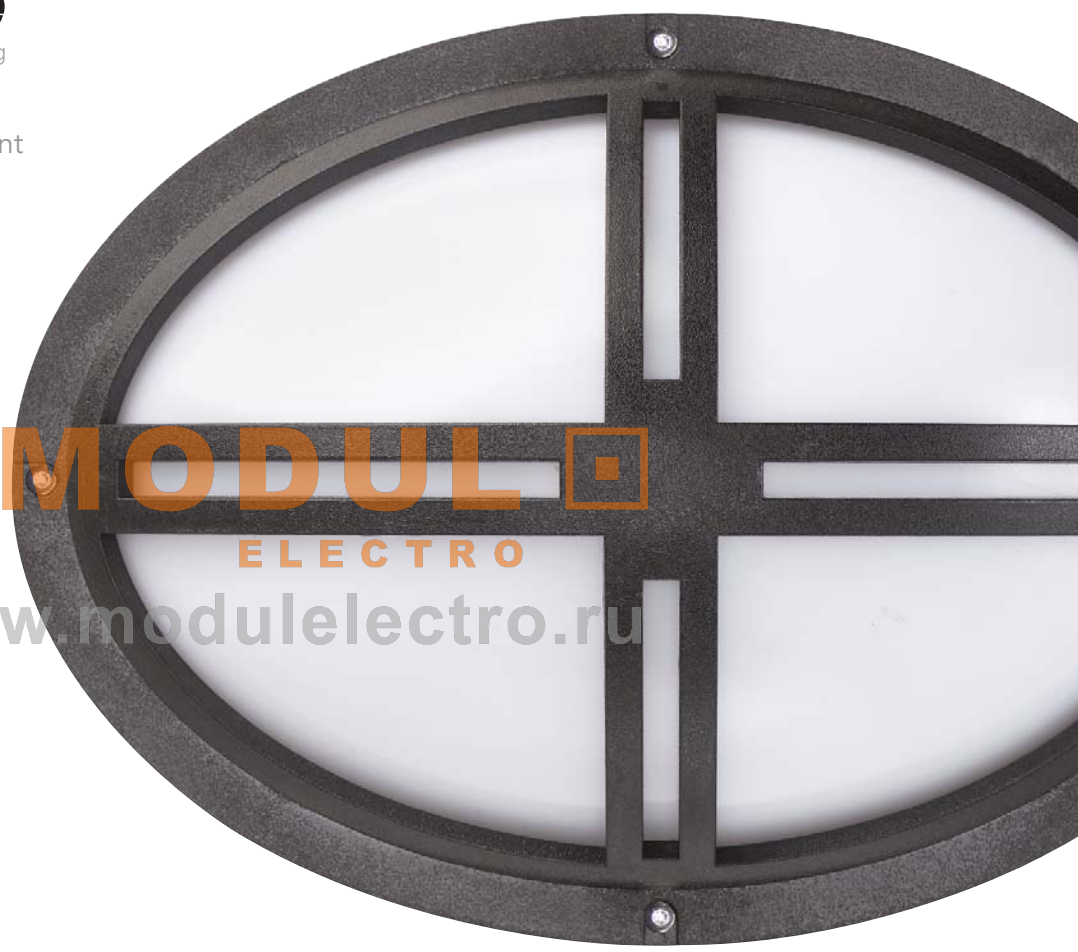


STONEWALL

AccuLite[®]
Commercial and Industrial Lighting

Decorative vandal resistant
lighting for H.I.D. and
Compact Fluorescent
lamps


ELECTRO
www.modulelectro.ru





MODUL
ELECTRO
www.modulelectro.ru

Stonewall

Remarkable toughness, a multitude of beautiful designs, and energy efficiency all come together in AccuLite's new Stonewall™ line of vandal resistant wall sconces. Ideally suited for decorative lighting applications in malls, schools, commercial buildings, and residential buildings, the Stonewall™ sconces enhance architectural features with elegance and style. And with an extensive array of heavy-duty construction features, once they are installed they will deliver years of trouble-free operation.

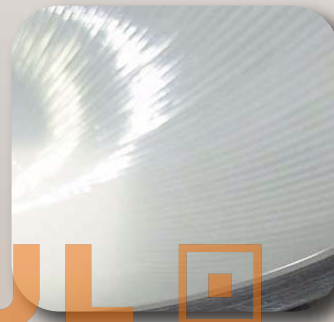
- Thick polycarbonate lens and face plate
- Heavy wall die-cast aluminum housing
- Scratch resistant powder coat finish
- Tamperproof screws
- Weatherproof seals
- Specification grade lampholders
- Stainless steel hardware



Cast in markings and plugged entries simplify installation

- **Housing:** One piece marine grade die cast aluminum housings are supplied in three depths.
- **Mounting:** Designed for quick installation, the housing features a cast in "level-line". A drilling pattern for 4" octagonal junction box is cast into all housings. Medium and deep housings have four 1/2" plugged entries.

- **Prismatic Lens:** Rugged 1/8" injection molded, UV stabilized polycarbonate. Available in opal white or clear depending on models.
- **Faceplate:** 1/8" injection molded polycarbonate. Available in black, white, bronze or silver.



Prismatic lens



Fully gasketed lens is secured to the faceplate with stainless steel clips

- **Weatherproof:** Extruded EPDM gasket. U-channel design ensures a positive seal.
- **Lens Retaining Clip:** One piece cover assembly simplifies installation and re-lamping. Lens, gasket and face plate are attached forming a one piece assembly.

- **Tamperproof:** Standard Torx™ T-15 pin-in-head tamperproof stainless steel screws secure the face plate to the housing.
- **Self Cleaning:** With a slot in the face plate, Stonewall™ allows water to drain off the lens to help keep the lens clean.



Tamperproof screws and drain hole

MODULO
ELECTRO

www.moduloelectro.ru

Stonewall

Attractive Styling:

Stonewall™ vandal resistant round luminaires are available in three stylish designs.



Faceplate: Outer Ring - Bronze
Lens: Opal

Lens:

Clear or opal white lenses are available. Molded from 1/8" thick UV stabilized vandal resistant polycarbonate.

Face Plate:

Vandal resistant polycarbonate face plates are standard.

Three styles are offered: Cross, Eyelid and Ring.

Finish:

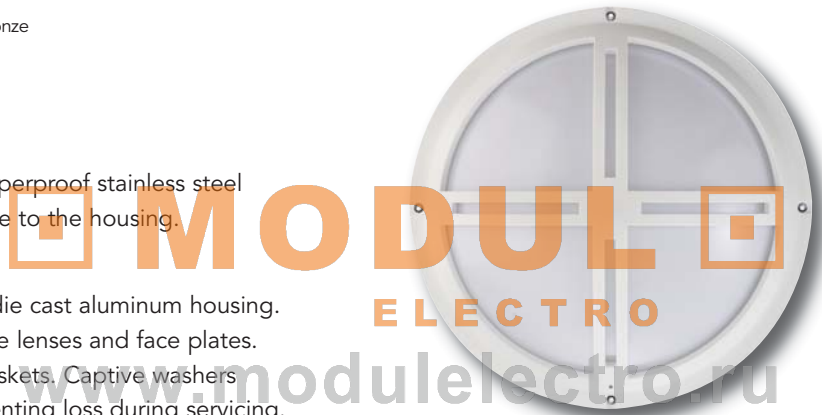
Polycarbonate faceplates are molded with bronze, black, white or silver resins. The die cast housings are finished with a lasting polyester powder coat finish in a matching color.

Tamperproof:

Torx™ T-15 pin-in-head tamperproof stainless steel screws secure the face plate to the housing.

Construction:

Heavy duty marine grade die cast aluminum housing. UV stabilized polycarbonate lenses and face plates. Fully sealed with EPDM gaskets. Captive washers secure the hardware, preventing loss during servicing. Meets UL1598/CSA C22.2 No. 250 suitable for wet locations.



Faceplate: Cross - White
Lens: Opal

Electrical:

HID: Specification grade medium base lampholders, high power factor ballasts.





CFL: GX24Q base lampholders, electronic ballasts.

Low Temperature Starting: Pulse start metal halide -40°F (-40°C), high pressure sodium -40°C (-40°C), compact fluorescent 0°F (-18°C).

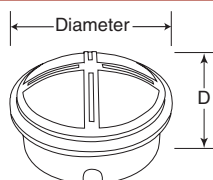


Faceplate: Eyelid - Silver
Lens: Opal

Ordering Information

VRD	70PS	-QT	-W	-E	-BZ	-L-Q
Series	Lamp Watts	Ballast Volts	Optics	Face Plate	Color	Options
 VRS Shallow Housing ADA compliant	Compact Fluorescent GX24Q base One lamp 126CF, 132CF, 142CF Two lamps 226CF	Electronic - UN 120V to 277V - E1 120V - E2 277V - E3 347V	Prismatic - W Opal White	Polycarbonate - E Eyelid	Housing Color - BZ Bronze	
 VRM Medium Housing	Compact Fluorescent GX24Q base One lamp 126CF, 132CF, 142CF, 157CF Two lamps 226CF, 232CF, 242CF Three lamps 326CF	Electronic - UN 120V to 277V - E1 120V - E2 277V - E3 347V	Prismatic - W Opal White	Polycarbonate - R Outer Ring only - X Cross - E Eyelid	- WH White - BL Black - SR Silver	Lamp CF lamp by others
 VRD Deep Housing	Pulse Start Metal Halide Medium Base - ED17 50PS, 70PS High Pressure Sodium Medium Base - B17 35HP (120V only), 50HP, 70HP	Magnetic - QT± 120V, 208V, 240V, 277V - TT 120V, 277V, 347V Magnetic - 120 120V - 277 277V - 347 347V	Prismatic - C Clear - W Opal White	Polycarbonate - R Outer Ring only - X Cross - E Eyelid	Housing Color - BZ Bronze - WH White - BL Black - SR Silver	Lamp - L Clear lamp. HID only - CL Coated lamp Quartz Auxiliary Double contact bayonet base, Quartz lamp by others - Q Cold Start/Hot Restrike, with delay - HQ Hot Restrike only Emergency Circuit - Quartz Lamp - ES Double contact bayonet base. (quartz lamp by others) Requires 120V emergency power source Fuse Holder Supplied with fuse Replace "-UN", "-QT" and "-TT" with line voltage suffix - F1 Single pole. Line to neutral
 VRD Deep Housing	Compact Fluorescent GX24Q base One lamp 126CF, 132CF, 142CF Two lamps 226CF, 232CF, 242CF Three lamps 326CF	Electronic - UN 120V to 277V - E1 120V - E2 277V - E3 347V	Prismatic - W Opal White	Polycarbonate - R Outer Ring only - X Cross - E Eyelid	Housing Color - BZ Bronze - WH White - BL Black - SR Silver	Lamp CF lamp by others Emergency CFL Ballast - Dual Function Lamp Replace voltage suffix "-UN" with the line voltage suffix, 120V or 277V available - EMB Minimum operating temperature 0°C - EMX Minimum operating temperature -20°C Fuse Holder Supplied with fuse Replace "-UN", "-QT" and "-TT" with line voltage suffix - F1 Single pole Line to neutral

Dimensions



Housing / Face Plate	Diameter	D
Shallow	Outer Ring Only	13 3/16" 3 5/8"
	With Face Plate	13 3/16" 4"
Medium	Outer Ring Only	13 3/16" 6"
	With Face Plate	13 3/16" 6 7/16"
Deep	Outer Ring Only	13 3/16" 7 1/2"
	With Face Plate	13 3/16" 7 7/8"

Stonewall



Mount: Vertical
Faceplate: Outer Ring - Bronze
Lens: Opal



Mount: Vertical
Faceplate: Eyelet - Bronze
Lens: Opal



Mount: Vertical
Faceplate: Cross - Bronze
Lens: Opal

Attractive Styling:

Stone Wall™ vandal resistant oval luminaires can be mounted in either horizontal or vertical arrangement.

Tamperproof:

Torx™ T-15 pin-in-head tamperproof stainless steel screws secure the face plate to the housing.

Construction:

Heavy duty marine grade die cast aluminum housing. UV stabilized polycarbonate lenses and face plates. Fully sealed with EPDM gaskets. Captive washers secure the hardware, preventing loss during servicing. Meets UL1598/CSA C22.2 No. 250 suitable for wet locations.

Lens:

Clear or opal white lenses are available. Molded from 1/8" thick UV stabilized vandal resistant polycarbonate.

Face Plate:

Four styles are offered: Horizontal Eyelet, Vertical Eyelet, Cross and Ring.

Finish:

Long lasting polyester powder coat finish is offered in bronze, black, white or silver.

Electrical:

HID: Specification grade medium base lampholders, high power factor ballasts.

CFL: GX24Q base lampholders, electronic ballasts.

Low Temperature Starting:

Pulse start metal halide -40°F (-40°C), high pressure sodium -40°F (-40°C), compact fluorescent 0°F (-18°C).



Mount: Horizontal
Faceplate: Eyelet - White
Lens: Opal



Mount: Horizontal
Faceplate: Cross - Bronze
Lens: Opal



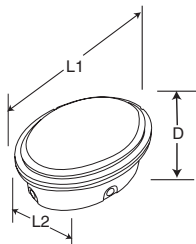
Mount: Horizontal
Faceplate: Outer Ring - Bronze
Lens: Opal

MODULO
ELECTRO
www.modulelectro.ru

Ordering Information

VOS	126CF	-UN	-W	-V	-BZ	
Series	Lamp Watts	Ballast Volts	Optics	Face Plate	Color	Options
 <p>VOS Shallow Housing ADA compliant</p>	<p>Compact Fluorescent GX24Q base One lamp 126CF, 132CF</p>	<p>Electronic - UN 120V to 277V - E1 120V - E2 120V - E3 347V</p>	<p>Prismatic - W Opal White</p>	<p>Polycarbonate - H Horizontal Eyelid - V Vertical Eyelid</p>	<p>Housing Color - BZ Bronze - WH White - BL Black - SR Silver</p>	<p>Lamp CF lamp by others</p>
 <p>VOM Medium Housing</p>	<p>Compact Fluorescent GX24Q base One lamp 126CF, 132CF, 142CF</p>	<p>Electronic - UN 120V to 277V - E1 120V - E2 277V - E3 347V</p>	<p>Prismatic - W Opal White</p>	<p>Polycarbonate - R Outer Ring only - X Cross - H Horizontal Eyelid - V Vertical Eyelid</p>		
 <p>VOD Deep Housing</p>	<p>Pulse Start Metal Halide Medium Base - ED17 50PS</p> <p>High Pressure Sodium Medium Base - B17 35HP (120V only) 50HP</p>	<p>Magnetic - QT 120V, 208V, 240V, 277V - TT 120V, 277V, 347V</p> <p>Magnetic - 120 120V - 277 277V - 347 347V</p>	<p>Prismatic - C Clear - W Opal White</p>	<p>Polycarbonate - R Outer Ring only - X Cross - H Horizontal Eyelid - V Vertical Eyelid</p>	<p>Housing Color - BZ Bronze - WH White - BL Black - SR Silver</p>	<p>Lamp - L Clear lamp. HID only</p> <p>Quartz Auxiliary Double contact bayonet base, Quartz lamp by others</p> <p>- Q Cold Start/Hot Restrike</p> <p>- HQ Hot Restrike only</p> <p>Emergency Circuit - Quartz Lamp - ES Double contact bayonet base. (quartz lamp by others) Requires 120V emergency power source</p> <p>Fuse Holder Supplied with fuse Replace "-UN", "-QT" and "-TT" with line voltage suffix</p> <p>- F1 Single pole Line to neutral</p>

Dimensions



Housing / Face Plate		L1	L2	D
Shallow	Outer Ring Only	13 1/16"	9 3/16"	3 3/4"
	With Face Plate	13 1/16"	9 3/16"	4"
Medium	Outer Ring Only	13 1/16"	9 3/16"	6 1/4"
	With Face Plate	13 1/16"	9 3/16"	6 1/2"
Deep	Outer Ring Only	13 1/16"	9 3/16"	7 9/16"
	With Face Plate	13 1/16"	9 3/16"	7 13/16"



juno[®]
Recessed and Troc Lighting

indy[™]
Architectural Recessed Lighting

Alfa[™]
Decorative Lighting Systems

AccuLite[®]
Commercial and Industrial Lighting

AcuLux[®]
Precision Recessed Lighting

Navilite[®]
Exit and Emergency Lighting

DanaLite
Architectural Linear Lighting

MODULO
ELECTRO
www.modulelectro.ru

1300 S. Wolf Road • Des Plaines, Illinois 60018
PHONE (847) 827.9880 • FAX (847) 827.2457 • junolightinggroup.com

Regional Offices & Warehouses:
California, Georgia, Illinois, Indiana, Pennsylvania, Texas, Ontario CN



AccuLite is a registered trademark of Juno Lighting, LLC.
Products shown in this brochure are covered by U.S. and
international patents and patents pending.
Specifications subject to change without notice.
© 2009 JUNO LIGHTING, LLC.

Printed in the U.S.A. LIT-ACCU-STONE Rev 10/09